



Rotherham Doncaster
and South Humber
NHS Foundation Trust

KEEPING SAFE The RDaSH way



"SAFE Child, SAFE Adult, SAFE Family, SAFE Staff"

'Hearing you'

'Respecting your choices'

'Understanding you'

'Being honest with you'



SAFE
CHILD

SAFE
ADULT

SAFE
FAMILY

SAFE
STAFF

Contents

What is the booklet about	4
What does Safeguarding adults mean?	4
What is abuse?	5
Physical abuse	5
Sexual abuse	6
Psychological, verbal and emotional	7
Financial / material	7
Neglect and acts of omission	7
Discrimination	8
Organisational	8
Modern slavery	9
Domestic abuse	9
Self-neglect	9
Where can abuse happen?	10
Who can abuse you?	10
Making Safeguarding personal	11
Sarah's six principles	12
Outcomes	13
Who can help?	14

What is this booklet about?

This booklet has been written with support from the patients of Amber Lodge and Sarah, a former user of services.

It will help you to understand what 'Safeguarding Adults' means. Some people will be able to read the booklet on their own. Other people will need help to read and understand it.

What does 'safeguarding adults' mean?

Safeguarding means protecting a person's right to live in safety and free from abuse and neglect. Everybody's life is different, but as staff we know that people with care and support needs may need extra help at times to keep them safe.

SAFE
Adult



What is abuse?

Abuse is when someone (or sometimes a group of people) do or say things to upset or frighten someone. Abuse can happen in different ways, sometimes you may not think you're being abused but other people may recognise it.

There are different types of abuse:

Physical



When someone hurts your body.
This includes:

- Hitting
- GBH"
- Kicking
- Grabbing hair
- Slapping
- Fighting
- Spitting
- Flicking ears
- Play-fighting
- Threatening
- Nipping
- Biting
- Punching

Sexual



When someone touches your private parts or other parts of your body in a way that you do not like or want. This includes:

- Kissing you
- Making you touch them
- Them touching you
- Undressing in front of a webcam
- Grooming
- Unwanted sexual acts
- Having sex with you when you don't want to (rape)

Psychological, verbal and emotional



When people talk to you in unkind ways. This includes:

- Teasing
- Using threatening language
- Ignoring you
- Treating you like a child

Financial / material



When people take your money or things which belong to you. This includes:

- Stealing your money or property
- Giving money away
- Being asked for things
- Being asked for money
- Buying things with your money for themselves
- Giving things away

Neglect and acts of omission



This is when people who are supposed to help you don't look after you properly. This includes:

- Not giving you the right medication
- Giving money away
- Not giving you enough food
- Being asked for money
- Not keeping you warm
- Giving things away

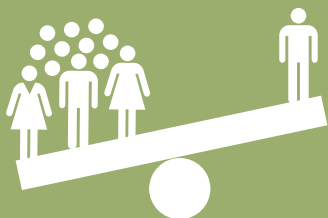
Discrimination



This is when people treat you badly because:

- Your skin colour is different
- You're gay lesbian or transgender
- You follow a different religion
- You have a disability

Organisational



This is when the people who provide your support put the needs of the business before your needs. This includes:

- Not taking the time to understand what you want
- Staff thinking that their needs and feelings are more important than yours
- You are ignored a lot of the time

Modern slavery



This is when people are forced into slavery, this might be:

- Forcing a person to work for no or very little pay
- You are locked in your room
- Trafficking – selling a person to do things they don't want to do
- Controlling what you do

Domestic abuse



This is when you are threatened either psychologically, physically, sexually, financially or emotionally by someone in the family or someone else you live with.

Self-neglect



This is when a person neglects their personal hygiene, health or environment.

Where can abuse happen?

Abuse can happen in many places. These include:

- Where you live – this might be in the home you rent or own, or in hospital or a residential home.
- Where you spend a lot of time – day service, college, gym etc.
- In the street.

Who can abuse you?

You can be abused by someone you know, these might be:

- People who are paid to look after you
- Family
- Neighbours or friends
- Other people who use services
- You can also be abused by someone you don't know




Making safeguarding personal


At RDaSH we are all committed to supporting adults in their own terms, and in a way that works for them as an individual. This is what we mean by “Making Safeguarding Personal”


Our promise to you


We will:


 Treat you well


 Listen to you


 Believe you and take you seriously


 Be honest with you about what we can do and explain what we cannot do

 Tell you the name of the person you can speak to when you need help and want to know something

 Involve you at the level you want at every stage and keep you informed

 Invite you to meetings at a place you can get to

 Support you to have access to the legal system

 Respect your choices and the right to change your mind

Sarah's six principles



Prevention

"Recognising things before they happen – do things before the situation gets serious"



Empowerment

"People help me to take control "



Protection

"People are properly risk assessed and are kept safe and there's no possibility of people getting hurt"



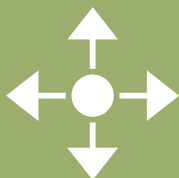
Partnership

"Involving everyone working together on issues"



Accountability

"Involving everyone working together on issues"



Proportionality

"Having the right response to keep me safe - listening and talking to me."

Adapted from the Care Act 2014

Outcomes

As staff we want you to be able to have the following outcomes from any Safeguarding action we take.

Feeling safer _____



More choice / control _____



Knowing where to get help _____



Knowing that action will be taken to try and prevent the same thing happening to someone else _____



Support to recover from your experience _____



Receive an apology _____



What you can do if you are worried about something?

If you need help and advice about any safeguarding issue, please ask a member of staff on the ward or in the team that supports you to contact the RDaSH Safeguarding Team.Cover

Cover image: ©Prostock-studio/enavto elements

If you would like this in large print, braille or on audiotape or would like this document in an alternative language, please contact the Patient Advice and Liaison Service on 0800 015 4334.

Amharic

ይህን ደብዳቤ በግልጽ እንዲታይ ወይም በብራይል ተጽፎ ለሌሎች ሰዎች ለማግኘት የሚፈልጉ ከዚህ የብዙ-ቀን ምክርና ግንኙነት አገልግሎት ላይ ይደርሱ።
0800 015 4334 ደውሎ ያገኙ።

Arabic

إذا أردت الحصول على هذه الوثيقة بالخط الكبير أو بلغة برايل أو على هيئة شريط صوتي أو مترجمة إلى لغة بديلة يرجى الإتصال بخدمة التنسيق ونصيحة المريض Patient Advice and Liaison Service على رقم الهاتف 0800 015 4334 .

Bengali

আপনি যদি এটা বড় অক্ষরের ছাপায়, ব্রেইল-এ, বা কানে শোনার টেইপ-এ পেতে চান অথবা আপনি যদি এই কাগজটা অন্য কোন ভাষায় পেতে চান, তাহলে দয়া করে 0800 015 4334 নম্বরে পেশেন্ট এ্যাডভাইস এন্ড লিয়েজন্স সার্ভিসের সাথে যোগাযোগ করবেন।

Cantonese (traditional Chinese)

如果你希望本文件是采用大字印刷、盲文或录音磁带等格式，或者希望本文件是使用其它的语言，请联络病患建议与联络服务 (Patient Advice and Liaison Service)，电话号码：0800 015 4334。

Czech

Pokud byste chtěli dokument psaný většími písmeny, brailovým písmem nebo na zvukové kazetě nebo v jiném jazyku, prosím, kontaktujte poradenskou službu pacientům na tel. 0800 015 4334.

Farsi

در صورت تمایل به داشتن این سند به نسخه ای با چاپ درشت تر، به خط بریل یا نسخه صوتی، و یا به زبانی دیگر، لطفاً با دفتر خدمات مشاوره و هماهنگی بیماران به شماره تلفن ۰۸۰۰۱۵۴۳۳۴ تماس حاصل نمایید.

French

Si vous désirez ce document en gros caractères, en braille, enregistré sur cassette audio ou dans une autre langue, veuillez contacter le service de conseils et liaison des patients [Patients Advice and Liaison Service] au 0800 015 4334.

Kurdish Sorani

ئەگەر تۆم ئەزەرنە بە چاڤی گەورە، بە برایل یان لەسەر شریتی دەنگی دەخوازیت یاخود نەم بەلگەنامە بە دیگەر زمانێکی دیگەر دەخوازیت، تکلیف پێویندی بکە بە خزمەتگوزاری زینمایی و هاوناھەنگی نەخۆشەو بە ژمارە 0800 015 4334.

Polish

Jeżeli dokument wymagany jest w wersji drukowanej dużą czcionką lub alfabetem Braille'a, na kasecie audio lub w innym języku, prosimy o kontakt z zespołem ds. kontaktów z pacjentami (Patient Advice and Liaison Service) pod numerem telefonu 0800 015 4334.

Punjabi

ਜੇ ਤੁਸੀਂ ਇਸ ਨੂੰ ਵੱਡੀ ਛਪਾਈ, ਬ੍ਰੇਲ ਜਾਂ ਸੁਣਨ ਵਾਲੀ ਟੇਪ ਤੇ ਚੁੱਟੇ ਹੋ ਜਾਂ ਇਸ ਸਮਰਾਥਨ ਨੂੰ ਹੋਰ ਭਾਸ਼ਾ ਵਿੱਚ ਚੁੱਟੇ ਹੋ, ਤਾਂ ਕਿਰਪਾ ਕਰਕੇ ਮਰੀਜ਼ ਸਲਾਹ ਅਤੇ ਤਾਲ-ਮੇਲ ਸੇਵਾ (Patient Advice and Liaison Service) ਨਾਲ 0800 015 4334 ਤੇ ਸੰਪਰਕ ਕਰੋ।

Somali

Haddii aad jeclaan lahayd in aad kan ku hesho far waaweyn, farta braille ee dadka indhaha la' ama cajalad dhegeysi ah ama haddii aad jeclaan lahayd in aad dukumeentigan ku hesho luqad kale, fadlan Adeegga Talobixinta iyo Xiriirinta ee Bukanleyda (Patient Advice and Liaison Service) kala soo xiriir lambarka 0800 015 4334.

Turkish

Bu belgeyi büyük yazı, braille (kör alfabesi) veya ses kaydı olarak veya başka bir dilde almak istiyorsanız, lütfen 0800 015 4334 no.lu telefondan Hasta Danışmanlık ve İrtibat Hizmetleri ile bağlantıya geçiniz.

Urdu

اگر آپ یہ بڑی چھپائی، بریل میں یا صوتی ٹیپ پر حاصل کرنا چاہتے ہیں یا یہ دستاویز کسی قابل زبان میں چاہیں تو برائے کرم پیٹینٹ ایڈوائس اے لنڈ سروس سے

0800 015 4334 پر رابطہ کریں۔

Vietnamese

Nếu muốn có tài liệu này dưới dạng in chữ cỡ lớn hơn, chữ nổi braille hay băng ghi âm, hoặc bằng một ngôn ngữ khác, xin quý vị liên hệ bộ phận Dịch vụ Tư vấn và Liên lạc với Bệnh nhân theo số 0800 015 4334.

This information is correct at the time of publishing
Last Reviewed: June 2019